

## BSc in Applied Computing e-top up

**Duration** - One year full time or two years part time

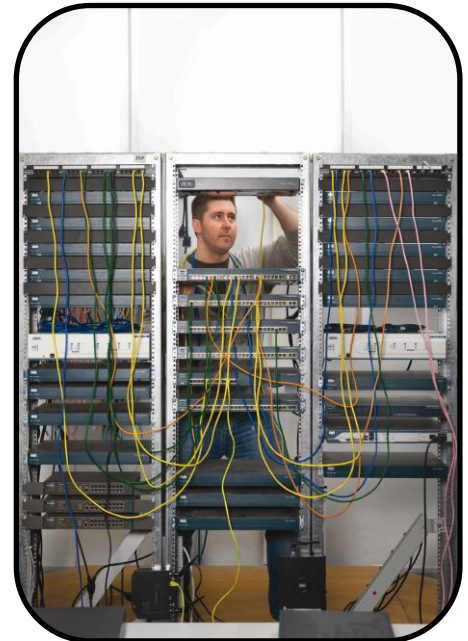
**Location** - Distance learning

**Course code** - Quote course title

### Course outline

The course is intended to complement your existing knowledge and skills with insights into the computing technologies necessary to provide information and support organisations in their decision making process.

This is a unique opportunity to enrol at Sheffield Hallam University but use Northumberland College as a study centre. Courses are flexible allowing you to start your studies in September 2011 or January 2012.



### Entry requirements

The e-top up is a final year programme for those who have already gained an HND or Foundation Degree in a computing subject and want to progress to a BSc Honours Degree.

### Course content

You will study:

- Professional practice
- Business intelligence
- Data warehousing
- Business appraisal and entrepreneurship
- IT project management
- A practical piece of computing work which can be used in your place of work.

### Assessment methods

Students will be assessed by a variety of methods including assignments, internal tests, group work and practical activities.

### Progression opportunities

You could progress to the MSc in Computing.

### Career opportunities

Upon successful completion of the course you will be able to apply for improved employment opportunities in the IT or business sector.